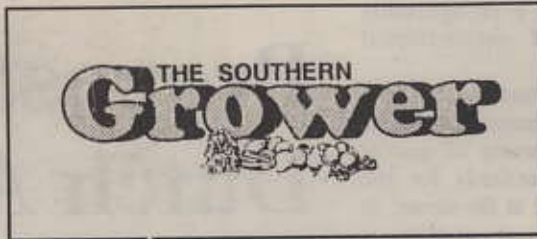


Southern Farmer
April 1996

Nature and science combine for the new QLS-ultra roof cover

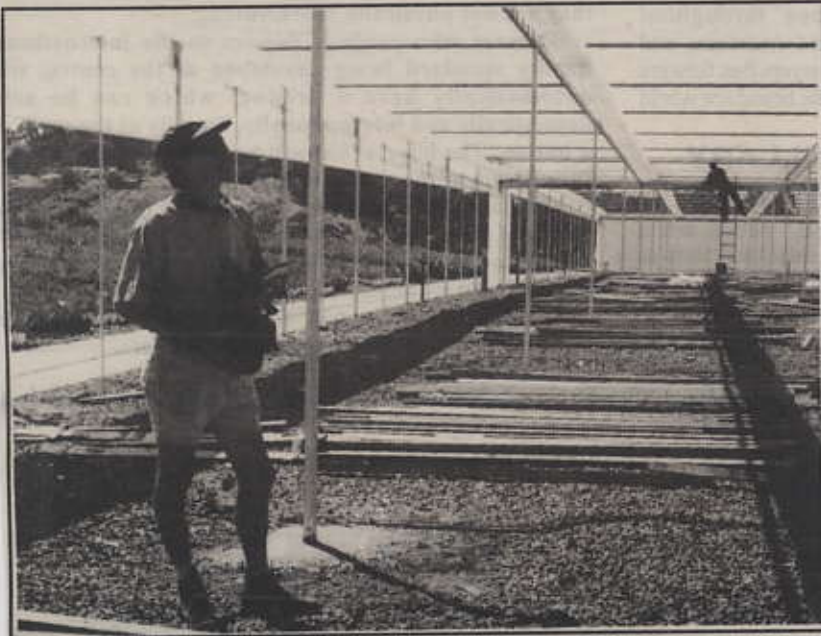
ADVANCED technology is not something often applied to the humble greenhouse, but the release of the QLS-ultra greenhouse open roof cover has successfully combined nature with the latest scientific research to revolutionise microclimate farming.

While conventional greenhouses often produce higher yields and better quality plants and



removable cover offers better control over crops and allows growers to determine the rate of growth. This is particularly important for flower crops as early or

"It is a very exciting concept. The screen is a serious revolution as it significantly increases quality and decreases labour costs," Mr Clough said.



Andrew Matthews, from Proteaflora in Monbulk, inspects the QLS-ultra greenhouse under construction.

crops other than outdoor crops through environment control, variables in temperature and precipitation can still create problems for growers.

The QLS-ultra is a retractable roof system made of a reinforced, watertight and light transmitting screen, that is not only flexible, but strong enough to withstand the most torrential hail storms.

The removable roof allows temperature variation for crops and plants in hot weather and can establish the perfect hardening off environment for maturing plants without having to relocate them outdoors.

Alternatively, the greenhouse can become fully enclosed again to protect hardening plants from severe cold and inclement weather.

Assuring stable weather conditions for this period can result in improved plant quality and higher yields by promoting consistent growth.

Essentially, the

late blooms can spell disaster around busy times like Mothers' Day.

The technology for the QLS-ultra has been developed over the past fourteen years in Sweden by a 110 year old curtain manufacturing company, Ludvig Svensson.

Heavy snow and severe cold in Sweden provided the impetus for a fabric with superior light penetration, strength, water tightness and flexibility.

"They are wonderful innovators, the Swedes," Richard Clough of Living Shade greenhouse climate control, said.